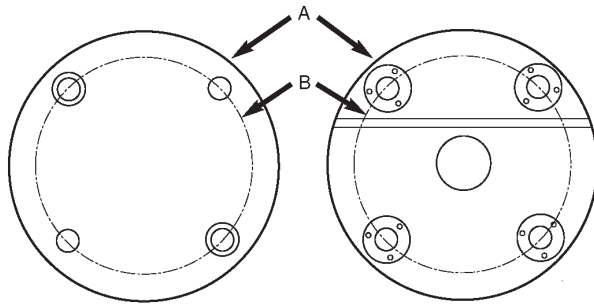


## Round Ball Lock® Fixture Plates and Subplates

### Standard Round



Fixture Plate

Subplate

Cast Aluminum, FreeMax™ or Steel equivalent

### Fixture Plate

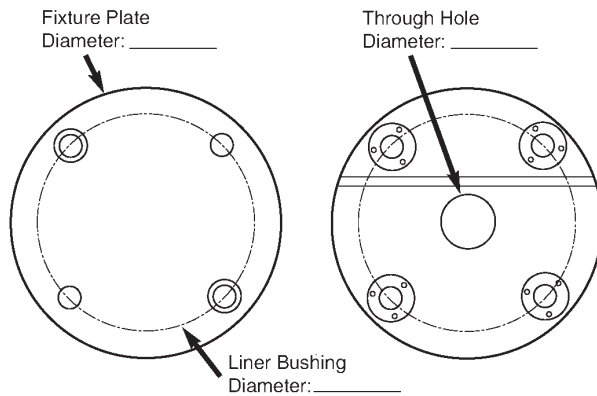
Part Number Alum.	Part Number Steel	A	B	Thick. ±0.005"	Ball Lock® Liner	Ball Lock® Shank	Weight (lbs) Alum.	Weight (lbs) Steel
28707	28807	8"	6"	3/4	16mm	49608	3.5	12.0
28708	28808	10"	8"	1	20mm	49602	7.0	28.0
28709	28809	12"	10"	1	20mm	49602	11	33.0
28710	28810	14"	12"	1	20mm	49602	15.0	43.0

### Subplate

Part Number Alum.	A	B	Thick. ±0.005"	Ball Lock® Receiver	Center Hole	Weight (lbs)
49107	8"	6"	3/4	16mm	1.00"	11.0
49108	10"	8"	1	20mm	2.00"	21.0
49109	12"	10"	1	20mm	2.00"	33.0

Metric sizes also available; please call for information.

### Custom Round Plates



- Cast Aluminum or FreeMax™ is steel or equivalent
- Thickness ± 0.005"
- Parallel within 0.001" Steel

#### Indexer:

Make: \_\_\_\_\_

Model: \_\_\_\_\_

Diameter: \_\_\_\_\_

Light Duty or Heavy Duty: \_\_\_\_\_

Through Hole Bore: \_\_\_\_\_

#### CNC Machine:

Make: \_\_\_\_\_

Model: \_\_\_\_\_

Weight Capacity: \_\_\_\_\_

#### Indexer Faceplate:

T-Slot Size: \_\_\_\_\_

Configuration/Orientation: \_\_\_\_\_

or

Drilled Tapped Hole Size: \_\_\_\_\_

Configuration/Orientation: \_\_\_\_\_

### Engineering Changes

Product improvement is a continuing process at Jergens. Specifications and engineering data are subject to change without notice. If current information is critical to your design, it is suggested that you contact Jergens Technical Sales Department to verify any dimensions or specifications.